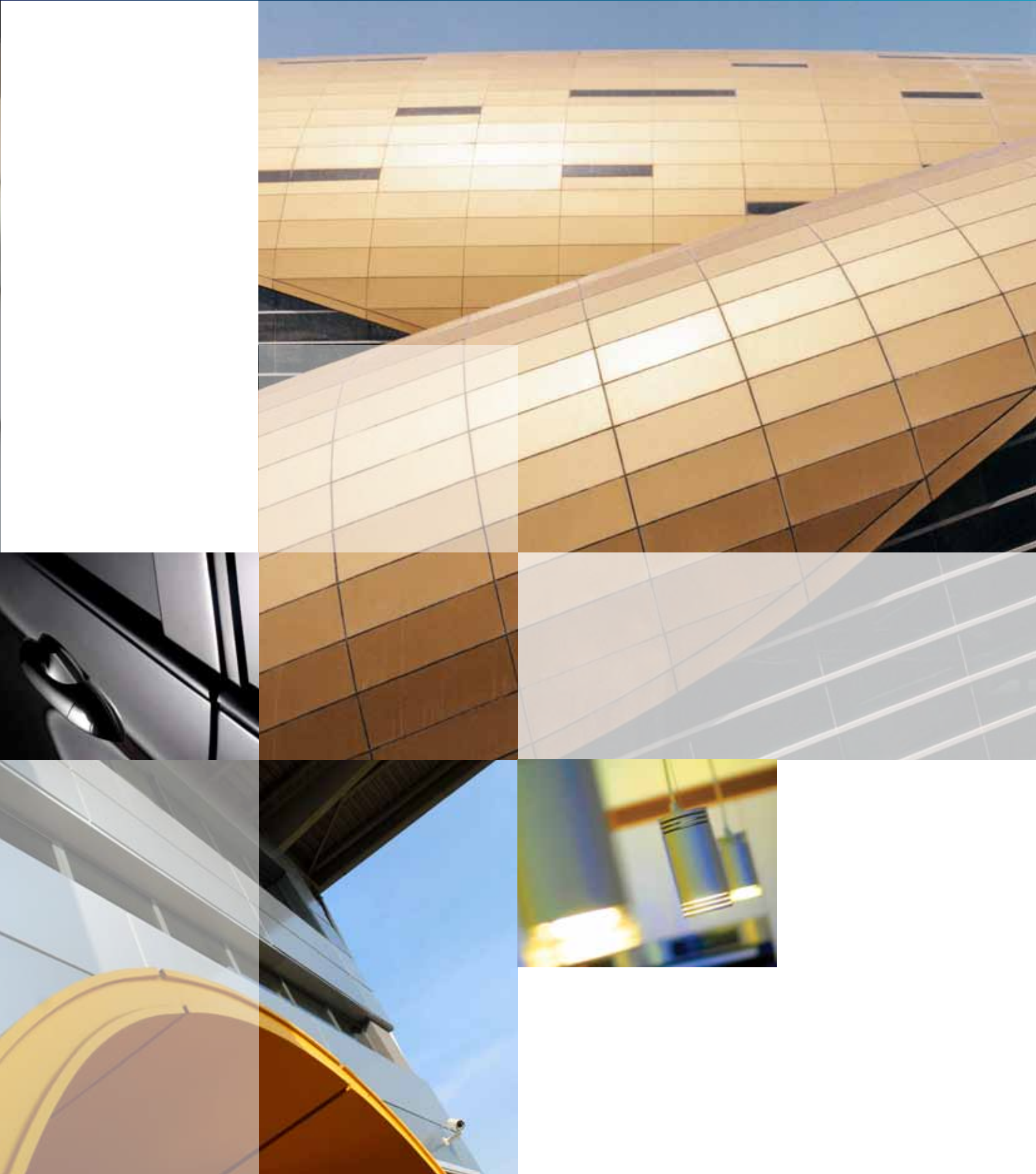


## Metallics





Code	Color Group	Applicable markets						Technology available					
		Architectural	GTC	Automotive	Furniture	Consumer	Industrial	700 Series	600 Series	D1000 Series	D2000 Series	800 Series	
Treasure Chest	Gold		●		●		●	E2202V					
Pure Gold	Gold	●								G5205V	Y5203V		
Golden Mane	Gold		●		●	●	●	E2003V	MY038V				
Showers of Gold	Gold		●		●		●	EY021VBD					
Sunstone Bronze	Bronze	●	●		●	●	●			G5204V	Y5200V		
Olympus Bronze	Bronze		●		●	●	●	E2201V	M2202V				
Sable Bronze	Bronze		●		●	●	●	E2300V	MY359V				
Bronze Pearl	Bronze	●	●		●	●	●			G2203V	Y2201V		
Bronze Monument	Bronze		●		●	●	●	EY216V					
Hammertone Silver	Hammertone		●		●			E5400V					
Hammertone Gold	Hammertone		●		●			E5401V					
Hammertone Bronze	Hammertone		●		●			E5402V					
Charcoal Pearl	Neutral	●	●		●	●	●			G5206V	Y5204V		
Asteroid Pearl	Neutral	●	●		●	●	●			G5207V	Y5205V		
Deep Anthracite	Neutral	●	●	●	●	●	●	E2004V	M2000V	G2000V			Y2000V
Shadow Shimmer	Neutral		●		●	●	●	E2100V	M2100V				
Alcantara	Neutral	●	●		●	●	●	E5201V	M5202V	G5208V	Y5206V		
Lunar Rock	Neutral		●		●	●	●	E5102V	MW133V				
Champagne	Champagne	●								G2210V	YY2207V		
Champagne Mica	Champagne		●		●			E5100V					
Champagne Shower	Champagne	●								G2205V	Y2202V		
Silver Champagne	Champagne	●								G2206V	Y2203V		

## Metallics

Metallics and metallic tones are being used across the design world. It's a trend seen at design fairs, in graphic design, architecture, fashion, beauty and interior decorating. Metallics add flair. They create elements of light and shade, and bring warmth and texture to all types of surfaces. Metallics are beautiful, timeless and sophisticated.

As the world's largest coatings company, no other company has more experience in color trends than AkzoNobel. Home to the Aesthetics Centre, our in-house color and design experts anticipate and predict movements in trends that affect color and coating choices for all applications. We have drawn on the knowledge of our global Aesthetics Centre, along with our own Asian insights, to provide the broadest range of metallic finishes on offer.

## How to Specify Interpon Powder Coatings

Once you have chosen Interpon Powder Coatings for your project, it's important to use the correct product. So we make specifying Interpon powder coatings easy:

- Nominate the Interpon product. e.g. Interpon 610.
- Nominate the color, finish and product code. e.g. Bronze MY359V.

To find your nearest Interpon applicator, please contact your Interpon representative or the Interpon Customer Care Team.

## Interpon D2000 Series

**Interpon D2000 Series** meets the needs of the most demanding projects. Developed specifically for architectural components the range is ideal for both exterior and interior aluminium applications from curtain wall extrusions to balustrades and louvers systems. Providing super durable protection from the elements the range exceeds global weathering standard AAMA2604, guaranteeing excellent color retention and high resistance to chalking. Exceptional endurance to environmental stressors including high levels of radiation, humidity, heavy pollutants and extreme temperatures are achieved through super durable polymer technology engineered to withstand weathering extremes.

## Interpon D1000 Series

**Interpon D1000 Series** is a standard durable powder coating developed on in-house resin technology providing a premium finish for architectural residential and light commercial applications. **Interpon D1000 Series** offers the applicator exceptional application performance with superior mileage and the support of a global warranty.

## Interpon 800 Series

**Interpon 800** is a series of high durability powder coatings designed for exterior exposure. Tested against the most severe specifications **Interpon 800** gives significantly improved gloss retention and resistance to color change.



Code	Color Group	Applicable markets						Technology available				
		Architectural	GTC	Automotive	Furniture	Consumer	Industrial	700 Series	600 Series	D1000 Series	D2000 Series	800 Series
Silver City	Silver		●		●	●	●	E2206V	M2206V			
Moon dust	Silver		●	●	●	●	●	E2009V	M2004V			
Disco	Silver		●		●	●	●	E2010V	M2005V			
Astral Silver	Silver	●	●	●	●	●	●	E2204V	M2204V	G2209V		Y2206V
Silver Foxy	Silver		●		●	●	●	E2011V	M2006V			
Lightning	Silver		●		●	●	●	E2012V	M2007V			
Platinum	Silver		●					EW01AV				
Silver Silk	Silver		●		●	●	●	E5005V				
Prestige	Silver		●	●	●	●	●	E5006V	MW041V			
Gangstar	Silver	●	●	●	●	●	●	E5207V	M5207V	G5213V	Y5211V	
Tonto Silver	Silver		●	●	●	●	●	E2205V	M2205V			
Natural Shimmer	Silver	●								G5214V	Y5212V	
Citi Pearl	Silver	●								G5215V	Y5213V	
Mink Silver	Silver		●		●	●	●	EW260V				
Champagne Pearl	Silver	●	●		●	●	●					YY276A
Pewter	Silver	●	●	●	●	●	●	E5101V	MW127V	G5100V	Y5100V	
Silken Touch	Specialty	●	●		●	●	●	E5007V	M5002V	G5001V	Y5000V	
Milky Way	Specialty	●	●		●	●	●	E5204V	M5204V	G5210V	Y5208V	
White Mica	Specialty	●	●		●	●	●	E5205V	M5205V	G5211V	Y5209V	
Galaxy	Specialty		●	●	●	●	●	E5003V	M5000V			
Burnt Bronze	Specialty		●		●	●	●	E2005V				
Ferrous	Specialty	●	●	●	●	●	●	E2006V	M2001V			
Copper Royal	Specialty		●	●	●	●	●	E2007V	M2002V			
Sparkling Black	Specialty	●	●	●	●	●	●	E5004V	M5001V	G5000V		
Chestnut	Specialty		●		●	●	●	E2008V	M2003V			
Mars	Specialty	●	●	●	●	●	●	E2203V	M2203V	G2208V		Y2205V
Stratosphere	Specialty	●	●	●	●	●	●	E5206V	M5206V	G5212V		Y5210V

## Interpon 700 Series

**Interpon 700** is a series of Interior epoxy/polyester hybrid powder coatings offering improved color, UV-light and heat stability – compared to the **Interpon 100** range of pure epoxies – whilst maintaining an optimum combination of decorative and protective qualities.

Interpon 700 Series:

- For interior use
- Good chemical resistance
- Good mechanical performance

## Interpon 600 Series

**Interpon 600** is a series of TGIC cured polyester based powder coatings designed for the exterior environment, offering good light and weather resistance from a single coat finish on a variety of substrates. The enhanced heat resistance of **Interpon 600** powders makes them ideal for use where color retention on surfaces exposed to continuous heat is required.

Interpon 600 Series:

- Good UV stability for exterior application
- Good heat resistance
- TGIC containing

## Interpon 610 Series

**Interpon 610** is a series of polyester based powder coatings designed for the exterior environment. **Interpon 610** are TGIC-free coatings that offer excellent light and weather resistance from a single coat finish on a variety of substrates.

Interpon 610 Series:

- Excellent UV stability for exterior application
- Good heat resistance
- TGIC free



## Silver

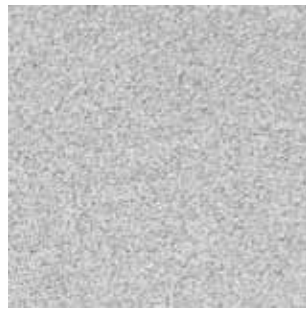
Choose from sleek silvers with a cool or warm tone, a little bit of sparkle or a modern matt finish.



Silver City



Moondust



Disco



Astral Silver



Silver Foxy



Lightning



Platinum



Silver Silk



Prestige



Gangstar



Tonto Silver



Natural Shimmer



Citi Pearl



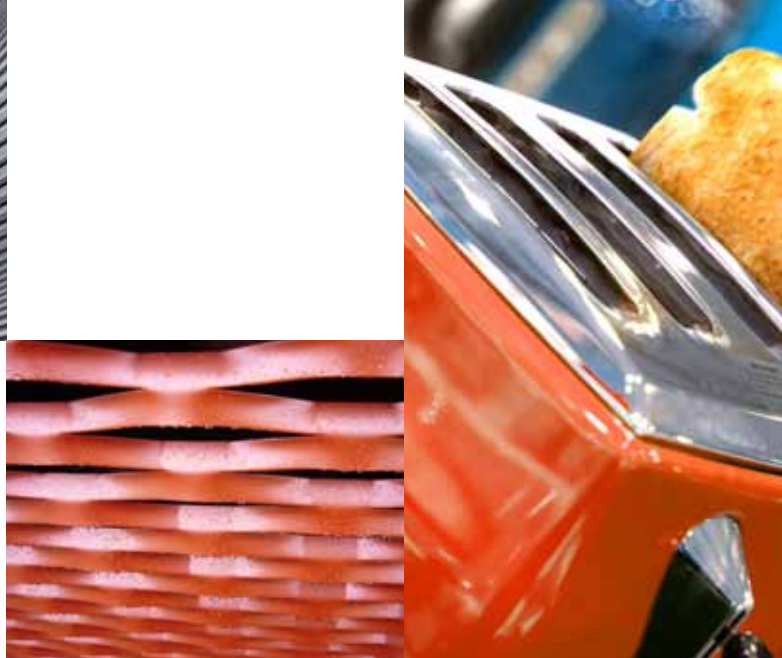
Mink Silver



Champagne Pearl



Pewter



## Specialty

Add extra pop with color and a shimmer.



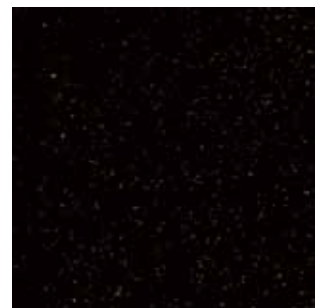
Silken Touch



Milky Way



White Mica



Galaxy



Burnt Bronze



Ferrous



Copper Royal



Sparkling Black



Chestnut



Mars



Stratosphere

### Australia

e: [salesoz@interpon.com](mailto:salesoz@interpon.com)  
www.[interpon.com.au](http://interpon.com.au)  
www.[specifyinterpon.com](http://specifyinterpon.com)  
Tel: 1800 630 516  
Fax: 1800 650 786

### New Zealand

e: [salesnz@interpon.com](mailto:salesnz@interpon.com)  
www.[interpon.co.nz](http://interpon.co.nz)  
www.[specifyinterpon.co.nz](http://specifyinterpon.co.nz)  
Tel: 0800 150 527  
Fax: 0800 809 679

### India

Akzo Nobel India Limited  
[interpon.in@akzonobel.com](mailto:interpon.in@akzonobel.com)  
www.[interpon.in](http://interpon.in)

Tel: +91 80 22895000  
Fax: +91 80 22895500

### Indonesia

PT International Paint Indonesia  
e: [customerservice.asean@akzonobel.com](mailto:customerservice.asean@akzonobel.com)  
Tel: +62 21 893 4270  
Fax: +62 21 893 4275

### Malaysia

AkzoNobel Industrial Coatings Sdn Bhd  
e: [customerservice.asean@akzonobel.com](mailto:customerservice.asean@akzonobel.com)  
Tel: +603 3290 4373  
Fax: +603 3290 4348

### Thailand

Akzo Nobel Paints (Thailand) Ltd.  
e: [customerservice.asean@akzonobel.com](mailto:customerservice.asean@akzonobel.com)  
Tel: +66 (0) 2706 1900  
Fax: +66 (0) 2706 1044

### Vietnam

AkzoNobel Powder Coatings (Vietnam) Co. Ltd  
e: [customerservice.asean@akzonobel.com](mailto:customerservice.asean@akzonobel.com)  
Tel: +84 8 3962 9966  
Fax: +84 8 3962 9977



## Gold

Rich and luxe, these golden tones are warm and luscious for a glamorous finish.

## Bronze

Deep and earthy bronze tones add the glow of sophistication.



Treasure Chest



Pure Gold



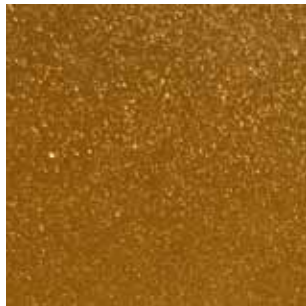
Sunstone Bronze



Olympus Bronze



Golden Mane



Showers of Gold



Sable Bronze



Bronze Pearl

## Hammertone

Darker tones with a glimmer of brilliance that provide a lustrous effect.



Bronze Monument



Hammertone Silver



Hammertone Gold



Hammertone Bronze



## Neutral

Gray and brown tones with a metallic shine work well tonally with anything.



Charcoal Pearl



Asteroid Pearl



Deep Anthracite



Shadow Shimmer



Alcantara



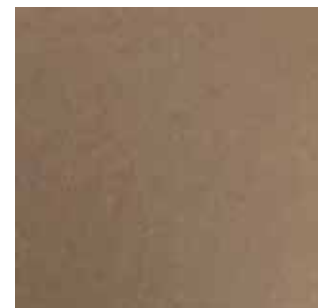
Lunar Rock

## Champagne

Lighter neutrals with subtle color tones shimmer and sparkle to provide an air of finesse.



Champagne



Champagne Mica



Champagne Shower



Silver Champagne

**Australia**

e: salesoz@interpon.com  
 www.interpon.com.au  
 www.specifyinterpon.com.au

Tel: 1800 630 516  
 Fax: 1800 650 786

**New Zealand**

e: salesnz@interpon.com  
 www.interpon.co.nz

Tel: 0800 150 527  
 Fax: 0800 809 679

**Indonesia**

PT International Paint  
 Indonesia  
 Cikarang Industrial Estate  
 Jl. Jababeka Raya  
 Block E9-11, Cikarang,  
 Bekasi 17530, Indonesia  
 Tel: +62 21 893 4270  
 Fax: +62 21 893 4275

**Malaysia**

AkzoNobel Industrial  
 Coatings Sdn Bhd  
 No. 28, Lorong Sungai Puloh  
 1A/KU6 Jalan Sungai Puloh  
 Batu 5 1/2 Kapar, 42100 Klang  
 Selangor D.E, Malaysia  
 Tel: +603 3290 4373  
 Fax: +603 3290 4348

**Thailand**

Akzo Nobel Paints  
 (Thailand) Ltd.  
 Coatings Bangplee Branch  
 900 Moo15, Theparak Road.  
 Bangsaothong,  
 Samutprakarn 10540,  
 Thailand  
 Tel: +66 (0) 2706 1900  
 Fax: +66 (0) 2706 1044

**Vietnam**

AkzoNobel Powder Coatings  
 (Vietnam) Co. Ltd  
 Floor 17, Flemington Tower  
 182 Le Dai Hanh Street  
 Ward 15, District 11  
 Ho Chi Minh City  
 Vietnam  
 Tel: +84 8 3962 9966  
 Fax: +84 8 3962 9977

**India**

Akzo Nobel India Limited  
 Plot # 62P, 62A,  
 62B, 43E,  
 Hoskote Industrial Area,  
 Bangalore – 562 114  
 India  
 Tel: +91 80 22895000  
 Fax: +91 80 22895500

## Care and Maintenance

Maintaining the integrity of your powder coated products is just like caring for your car – and is a smart way to protect your investment. Over time with exposure to the elements, powder coatings may show signs of weathering such as loss of gloss, chalking and slight color change. A simple regular clean will minimise the effects of weathering and will remove dirt, grime and other build-up detrimental to all powder coatings. The best method of cleaning is by regular washing of the coating using a solution of warm water and nonabrasive, pH neutral detergent solution. Surfaces should be thoroughly rinsed after cleaning to remove all residues. All surfaces should be cleaned using a soft cloth, sponge or a soft natural bristle brush.

Distributed by



**EPD**®



EPD applies to D2000 and D1000 Series only

**Disclaimer**

Unless otherwise agreed by us in writing, any contract to purchase products referred to in this color card and any advice that we give in connection with the supply of products are subject to our standard conditions of sale. Typical end uses for Interpon products are displayed in this publication using actual projects and representative images. AkzoNobel endeavours to ensure the information contained in this publication is correct at the time of printing. All products referred to and any technical advice provided is subject to the standard terms and conditions of sale of the AkzoNobel supplying company. Interpon® is a registered trademark of AkzoNobel Pty Limited.

**Interpon**®